



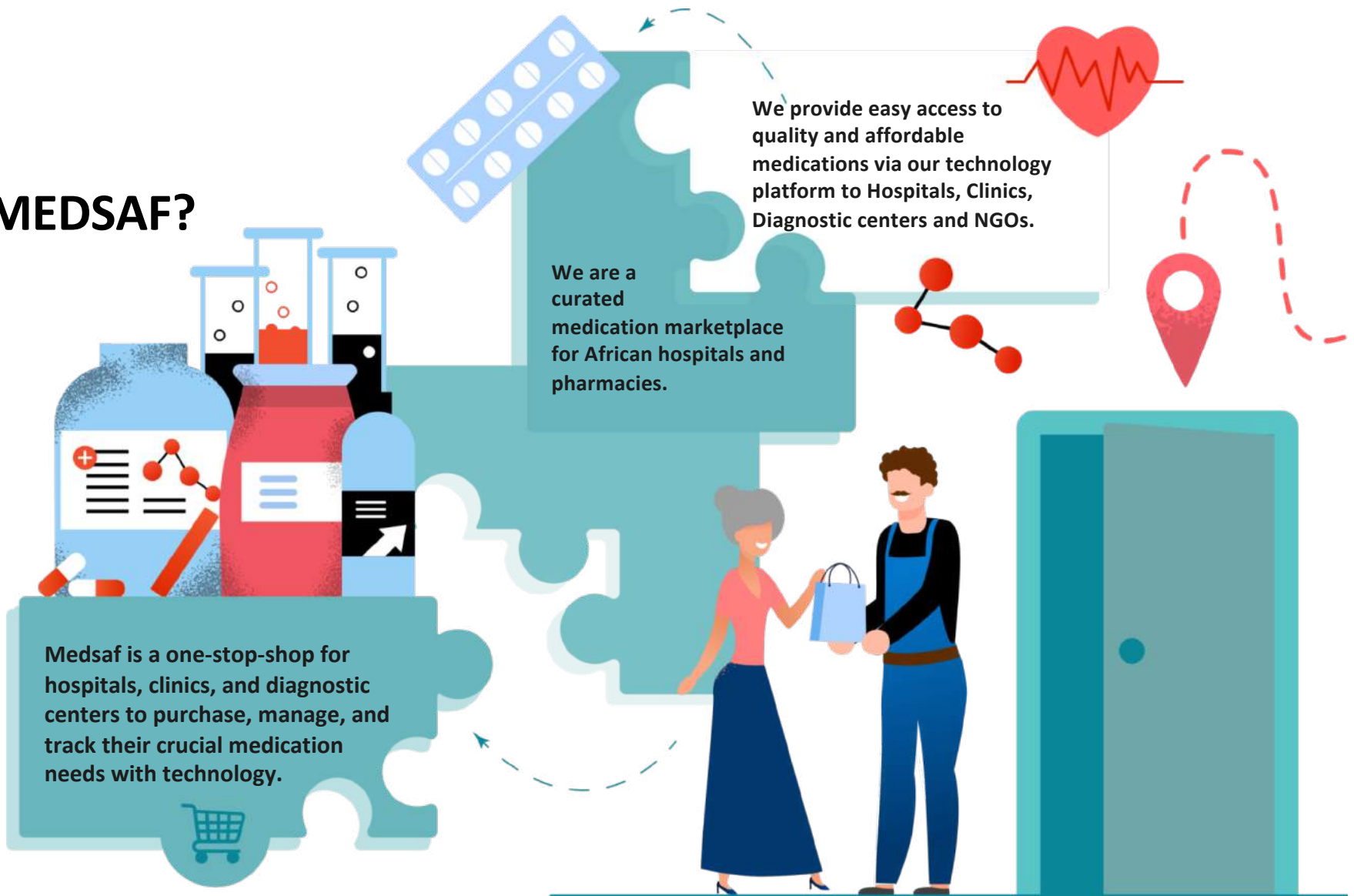
# MEDSAF PRODUCTS AND SERVICES

Medsaf Marketing Team





# WHO IS MEDSAF?





Marketplace



Patient Direct



Diagnostics



MEDSAF PRODUCTS



Assure



Speedy



Lab Assure

Platinum

[www.medsaf.com](http://www.medsaf.com)



## MEDSAF MARKETPLACE

Medsaf curates' medications based on hospital demand and use our extensive market research and specialized algorithms to set medication prices in real-time and deliver efficiently.

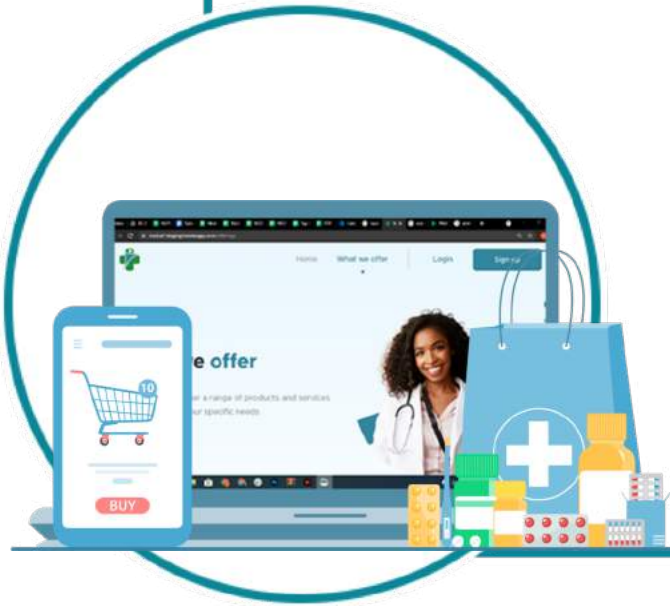
### *Target Audience:*

Healthcare value chain; Medical Doctors, Pharmacists, Nurses, medical practitioners, Government bodies, NGOs, Corporate bodies, etc.

### *Marketplace Benefits:*

- Quality and affordable medication.
- Effective Delivery timeline
- Medication Mix, over 5,000 unique medications to choose from.
- Transparency in the medication procurement processes.
- Quality control as a service.
- Unlimited access to quality medications

**Website: [www.medsaf.com](http://www.medsaf.com)**





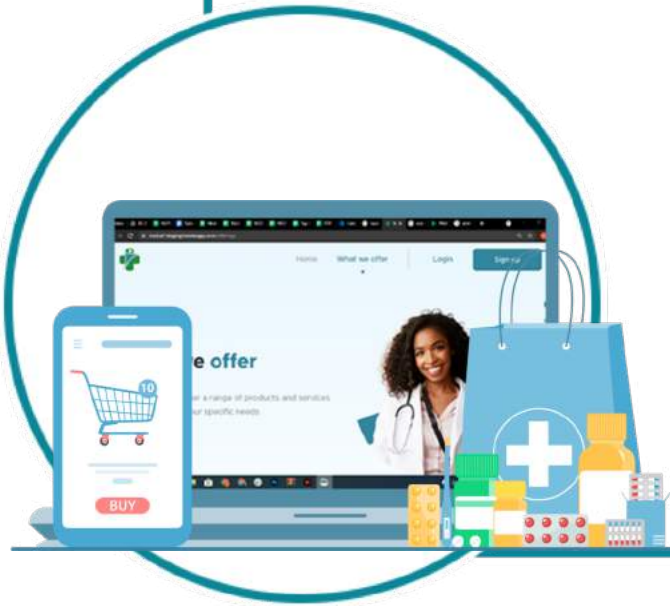
# MEDSAF MARKETPLACE

## *How it Works:*

Log on to [www.medsaf.com](http://www.medsaf.com) and either signup as a new customer or log in as an existing customer. For a new signup, you will need to send in your credentials to identify as a licensed facility before we you can access our platform filled with 5,000+ vetted medications.

To explore Marketplace efficiently, payment methods available are 'Upfront payment, Payment on Delivery or 30 days Credit with a Medsaf financing partner'. This is to ensure we can service your facility and other facilities that need quality and affordable medications effectively.

Delivery timeline for facilities in Lagos is between 24- 48 hours while outside Lagos is between 24-72 hours after PO has been treated.



## MEDSAF SPEEDY

With Medsaf Speedy, crucial medication needs are delivered to facilities the same day they order (before 12noon) within Lagos and 24-72 hours outside Lagos. These selected medications for Medsaf Speedy are extracted from pre-populated medications we have stocked in our warehouse for every facility.

### *Target Audience:*

All medical facilities in the country

### *Speedy Benefits:*

- Same Day Delivery (within Lagos), 24-72 hours outside Lagos
- Old pricing advantage
- Quality assured medications.
- Medication Mix

*Website:* [www.medsaf.com](http://www.medsaf.com)



## MEDSAF SPEEDY

### *How it works:*

The Speedy medication list is always attached to every email campaign sent out to all facilities. The order is treated separately from normal medication orders as they have a 'same-day delivery' tag on them.

Once a facility highlights the medications they want from the medication list, the procurement and operations team treat the order with utmost priority as the order must be delivered within the said delivery timeline communicated.

To explore Speedy efficiently, payment methods available are 'Upfront payment, Payment on Delivery or 30 days Credit with Medsaf financing partners. This is to ensure we can service your facility and other facilities that need quality and affordable medications effectively.



## MEDSAF DIAGNOSTICS

Medsaf is the provider of quality diagnostics products and services. We provide easy access to quality and affordable diagnostics products, reagents, equipment and consumables via our technological platform. We supply mostly Covid-19 test kits such as VTM and Sansure.

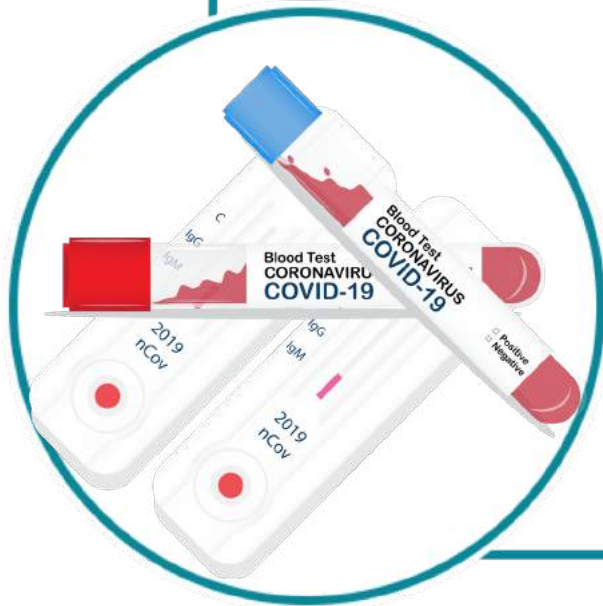
### *Target Audience:*

Laboratories, Government Hospitals and other Covid test centers, Private hospital, Corporate bodies etc.

### *Diagnostics Benefits:*

- Quality and affordable covid test kits
- Product Mix which ranges from test kits to isolation gowns and other diagnostics products.
- Transparency in the entire operation and processes.

**Website:** [www.medsaf.com](http://www.medsaf.com)





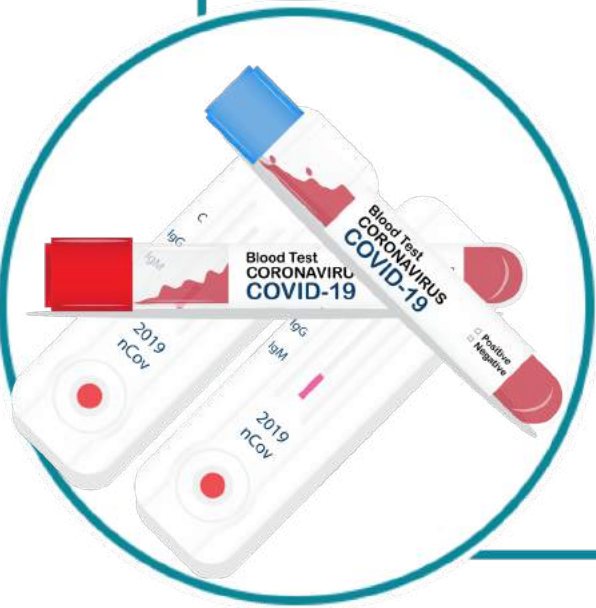
## MEDSAF DIAGNOSTICS

### *How it works:*

Medsaf sends a list of the diagnostics products and consumables we have via a brochure with their prices included for our facilities to choose which product they are ordering for.

The payment options available for this product is 'Upfront payment or Payment on Delivery' because most of the diagnostics products are shipped from abroad.

Delivery timeline for diagnostic products such as VTM and Sansure, it takes 14-21 days to deliver to the facility since they are imported. For other consumables that can be sourced locally it takes 48-72 working hours to deliver.



## MEDSAF ASSURE

Facilities get to lock in the prices of their crucial medications and get in front of their medications needs. Medication prices can be locked for 3 or 6 months, respectively. An initial deposit is required and then auto withdrawal from the facility's account for subsequent months.

### *Target Audience:*

All medical facilities countrywide

### *Assure Benefits:*

- Same medication prices for 3 or 6 months
- Safe delivery of procured medications
- Quality and affordable medications
- Stock management
- Quality control as a service.

***Website:*** [www.assure.medsaf.com](http://www.assure.medsaf.com)





## MEDSAF ASSURE

### *How it works:*

Log on to [www.assure.medsaf.com](http://www.assure.medsaf.com) and either signup as a new customer or log in as an existing customer. For a new signup, you will need to send in your credentials to identify as a licensed facility before we you can access the program.

With over 200+ crucial medications on the platform, payment method for Medsaf Assure is 'Upfront payment with Paystack for the first month and then payment for subsequent months is withdrawn automatically via a debit mandate.

Facilities can decide their delivery date to be either 1<sup>st</sup> or 15<sup>th</sup> of a new month and you can lock in your medications for either 3 or 6 months.

Medsaf Assure orders are also treated with utmost priority.



## PATIENT DIRECT

Medsaf works with network of doctors to verify doctors' prescriptions and source the highest quality chronic illness medications for their patients. We work on negotiating prices and offering the medications at wholesale prices so that the patients can afford to have the very best care possible.

### *Target Audience:*

All medical facilities Chronically ill patients, Cancer patients, Asthma patients, other special case patients and doctors countrywide

### *Patient Direct Benefits:*

- Quality and affordable medication.
- Effective Delivery timeline
- Transparency in the medication procurement processes.
- Quality control as a service.

***Website: Not Yet Launched***





## PATIENT DIRECT

### *How it works:*

Licensed medical doctors refer their patients to us for profiling under the program. The patients are to produce the following; Proof of ID, Full name, address, Date of Birth and Drug prescription.

Medsaf then verifies the drug prescriptions and make sure they are valid.

The patients then identify the medication period which can be either 3 months, 6 months or 12 months. Medsaf makes sure the drug prescription and doctors verbal approval notates the purchase timeline and if the drug prescription is valid with the timelines.

The only payment method valid for this product is 'Upfront payment' and the customers order is put on a calendar for reminder emails and refill information





## MEDSAF PLATINUM

Medsaf Platinum Partners Program is a specially curated and tailored program where all the eligible facilities' procurement needs are specially and efficiently. The facility works with their own dedicated Medsaf procurement team member and the entire process of purchasing medications and analyzing prices are seamless and cost-effective

### *Target Audience:*

Platinum facilities (facilities that have purchased more than 2 million monthly for more than 3 months)

### *Platinum Benefits:*

- Dedicated procurement manager with Medsaf
- Brand preference
- Access to credit
- Demand planning analysis
- Stock inventory
- Safe and efficient delivery.

***Website:*** [www.medsaf.com](http://www.medsaf.com)





## MEDSAF PLATINUM

### *How it works:*

Medsaf have pre-populated medications of all platinum facilities and then supply their medications need at the beginning of every month. We place a priority on their order because they have signed an MOU with Medsaf which makes them partners.

The requirements to become Platinum, the facility must do a N3 million worth of order in a month to be considered a platinum facility.

The payment methods for platinum customers is either Upfront payment, payment on delivery or 30 days credit with Medsaf financing partners. There is a 0.1% incentive for facilities that pay earlier than their stipulated timeline



## MEDSAF LAB ASSURE

Facilities get to lock-in the prices of their crucial diagnostics products and get in front of their needs. The diagnostics product prices can be locked for 3 or 6 months, respectively. An initial deposit is required and then auto withdrawal from the facility's account for subsequent months.

### *Target Audience:*

Laboratories, Government Hospitals and other Covid test centers, Private hospital, Corporate bodies etc.

### *Lab Assure Benefits:*

- Same diagnostics product prices for 3 or 6 months
- Safe delivery of procured products
- Stock management
- Quality control as a service.

***Website: Not yet launched***







Visit our website to shop today  
[www.medsaf.com](http://www.medsaf.com)

Thank you  
Medsaf Marketing Team

